



Ionian Building, 45 Narrow Street, E14 8DW
£1,950 Per Calendar Month



Ionian Building, 45 Narrow Street, E14 8DW

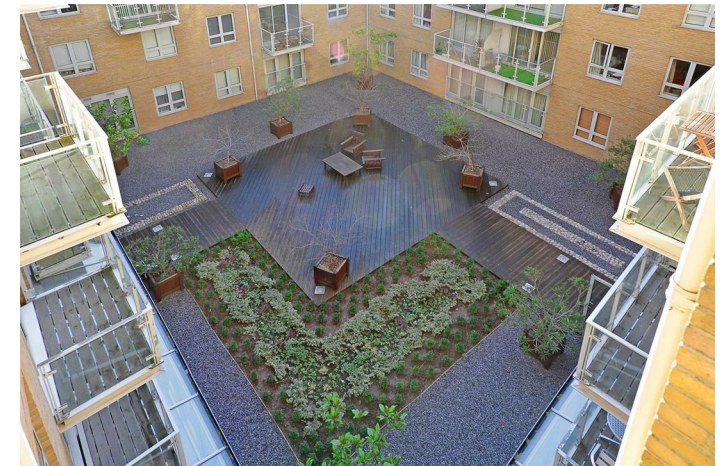
£1,950 Per Calendar Month

This extremely spacious one bedroom flat in the desirable Ionian Building on Narrow Street boasts an approximate 800 sq ft of living space. The property is located in the popular Mosaic development in Limehouse and has a large open plan reception/dining room/kitchen, with access to an L shaped balcony from both the reception and bedroom. Plenty of storage is also included along with a secure underground parking space, communal garden and 24hr concierge.

Limehouse DLR is a short walk away, making this an ideal flat for City and Canary Wharf workers alike. The property is offered on a furnished basis.

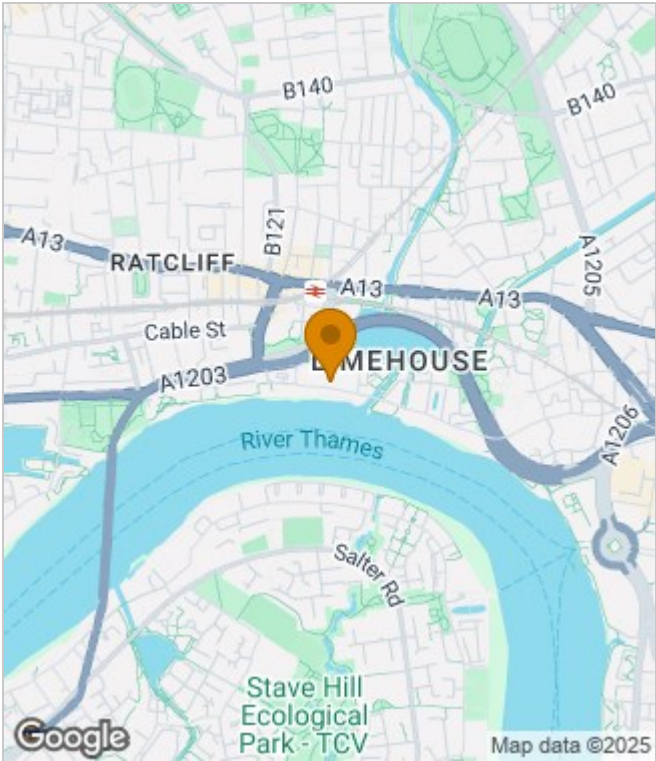
Description

- 800 sq ft of living space
- Extremely spacious one bedroom flat
- Large open plan reception
- 24 hour concierge
- Secure underground parking space
- Private L-Shape balcony
- Excellent local amenities
- Communal garden
- Close to Limehouse DLR and C2C
- Short commute to Canary Wharf

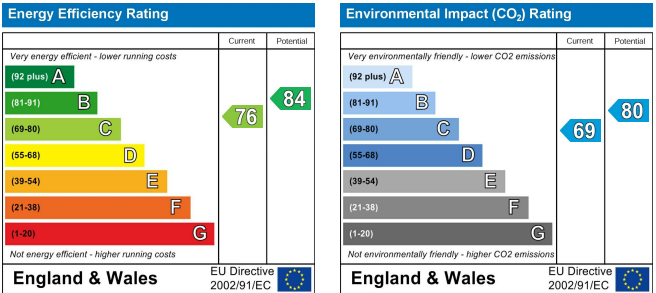


Furnished
Council Tax Band: E
Available: 17th July 2025

Area Map



Energy Performance Graph



These particulars, whilst believed to be accurate are set out as a general outline only for guidance and do not constitute any part of an offer or contract. Intending purchasers should not rely on them as statements of representation of fact, but must satisfy themselves by inspection or otherwise as to their accuracy. No person in this firms employment has the authority to make or give any representation or warranty in respect of the property.